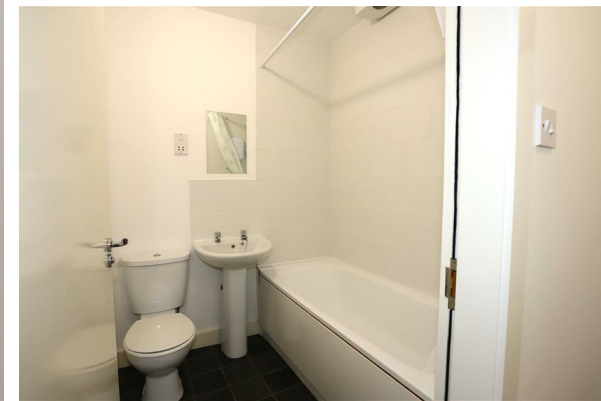




TO LET



Apt 1 15 Belmont Drive, Tuebrook, Liverpool, Merseyside, L6 7UW

£500 PCM



RESIDE  
MANCHESTER

- One Bedroom
- Bay Windows
- Available Immediately
- Video Tour Available
- Furnished
- Close to Newsham Park
- EPC Rating D
- On-Street Parking



## Directions

## THE PROPERTY

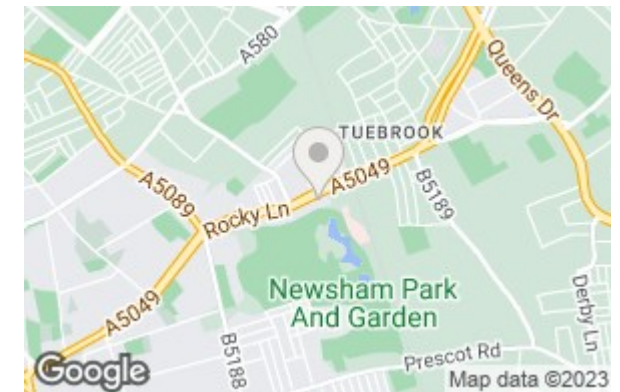
A lovely one-bedroom apartment which is located on the ground floor of this converted house, in a popular residential area. The property benefits from being furnished throughout and features large windows to give plenty of natural light throughout the living area. The residents have access to a shared back garden, which can be enjoyed in the Summer.

The property is just a 10-minute walk to Newsham Park, which is surrounded by fine period architecture. There are plenty of paths throughout, along with fishing lakes, so this is a great place for a stroll or a run for the more athletic!

There are plenty of shops nearby, as well as a number of local restaurants for you to sample.

Viewings are available immediately, and the property is ready to move into now.

## SITUATION



## Fees

Please contact the office for further details on holding deposits and the Tenant Fee Act 2019.